
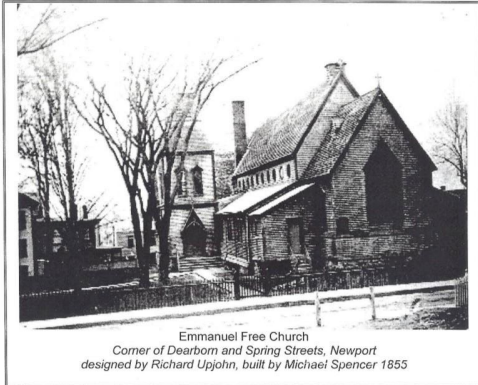




173rd Annual Meeting January 26, 2025

Emmanuel Church		
admin@emmanuelnewport.org https://emmanuelnewport.org	401-847-0675 42 Dearborn St, Newport, RI 02840	

SERVING OUR NEIGHBORS



In late 1841 mission worship services, called “cottage meetings,” were organized for the millworkers of the fifth ward and held in private homes. As our numbers grew, in 1849 we bought an unused Baptist Meeting House at the northeast corner of South Baptist and Thames Street, and a nearby store was used for the Sunday School. Because Emmanuel welcomed all—with or without money—the parish developed around the needs of the poorer members, through the support of wealthier members. A state charter was granted on June 2, 1852 by the General Assembly and we officially became (and still are) known as “The Rector, Wardens, and Vestry of Emmanuel Church.” On March

13, 1852, we became a mission congregation under the name of Immanuel Free Church. Land on the corner of Spring and Dearborn Streets was purchased by Edward King in 1852 and donated for a church to be built. Fundraising began and the church was built and furnished for \$15,000.¹⁹ It was a wooden Tudor structure designed by Richard Upjohn, famed churchman and architect. Michael Spencer, a Newport native, was the builder.

A group of parishioners gathered in 1860 to establish and support a weekday school in connection with the parish. After a few years, as neighborhood children went to local schools, the church school disbanded. It was re-established in 2006 as a preschool. The Emmanuel Day School closed permanently in 2020 due to the COVID pandemic.

While in New York, John Nicholas Brown contracted typhoid fever and died unexpectedly on May 1, 1900. He was survived by his young wife, Natalie Bayard Brown and ten-week old son, John Nicholas Brown, Jr. As a memorial to her husband, Natalie Bayard Brown gave a new church to take the place of the Upjohn building, which was in disrepair.

In 1922, Newport Hospital named Emmanuel “the church of the people” saying, *“only strangers can realize how few open doors there are in a small conservative New England city. If we are at times disconcerted, we try and remember how few desirable avenues are open. In this connection, we must thank Emmanuel Church for its wonderful hospitality.”*

Emmanuel has long been a meeting place for numerous community organizations, some of which began at Emmanuel, outgrew our facilities, and continue to this day, including “Soup’s On.” With a goal of simply feeding people, this endeavor blossomed into a cooperative ministry of the Martin Luther King, Jr. Community Center and twenty-two houses of worship from fourteen different denominations, working together to provide at least one meal every day of the month. A community meal, free and open to everyone, is still offered at Emmanuel at 5pm on the first Tuesday of every month. Also starting at Emmanuel was a support group for parents with developmentally challenged children, now the James L. Maher Center; as well as Hospice, and the Church Community Housing Corporation, a program which helps low-income families buy an affordable home. We have welcomed the Island Dance Company, Seele Chamber Musicale Ensemble, and the St. Petersburg Men’s Choir from St. Petersburg, Russia to share our property. In 2021, we established a long-term space sharing collaboration with Newport Classical now at home in the Newport Classical Recital Hall, allowing Newport Classical to provide year-round programming with the community.

In 2019, we welcomed the Rev. Della Wager Wells as our Rector to lead Emmanuel in our next chapter.

CONTENTS

Serving Our Neighbors 2

Vestry..... 4

Staff of Emmanuel Church 5

Agenda..... 6

Minutes..... 7

Rector’s Report.....10

Senior Warden’s Report13

Junior Warden and Property Committee Report18

Ministries of Emmanuel 20

Nominating Committee Report..... 27

Nominee Biographies 28

Report of the Assistant Treasurer31

Treasurer’s Report.....31



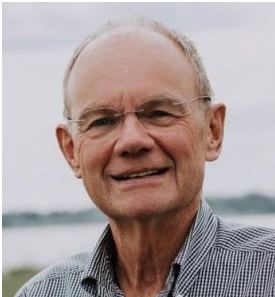
VESTRY



The Rev. Della Wager Wells
Rector



Valerie Martin
Senior Warden



Jim Kaull
Junior Warden



David Frazier
Treasurer



Carolyn Swiggart
Assistant Treasurer



Margret Keiran
Vestry Clerk



Brian Ladley
Vestry-at-Large



Robert Messor
Vestry-at-Large



David Thalmann
Vestry-at-Large



Paige Dinger
Vestry-at-Large



Robert O'Donnell
Vestry-at-Large



Ellen Vadney
Vestry-at-Large

We share our home, building a vibrant, loving community



STAFF OF EMMANUEL CHURCH



The Rev. Della Wager Wells
Rector



Randy Elkins
Director of Music
and Events



Randy Elkins
Parish Administrator

AGENDA

The One Hundred and Seventy-third Annual Meeting
of
Emmanuel Church
January 26, 2025
11:30 AM in the Church

Agenda

Opening Prayer

Moment of Silence for Necrology

Josephine G. Sleeper
John Brian Haworth
Nancy J. Cormier
Elizabeth Newell Steiss

Minutes of the 172nd Annual Meeting

Rector's Report

Senior Warden's Report

Junior Warden's Property Report

Ministries of Emmanuel

Report of the Assistant Treasurer

Treasurer's Report: Approved Budget for 2025

Open Discussion

Nominating Committee Report

Election

Parishioner Recognition

- The Saints Among Us
- The Lil Hargrove Service Award

Closing Prayer

MINUTES

Emmanuel Church 172nd Annual Meeting Minutes

January 14, 2024

I. Vestry Present

In Person: The Rev. Della Wager Wells, Senior Warden Debra Venancio, Junior Warden Jim Kaull, Treasurer Elisabeth McCarthy, Assistant Treasurer Carolyn Swiggart, Clerk Valerie Martin and Member-at-Large: Ellen Vadney.

Via Zoom: Members at Large: David Frazier, Ed Gosling and Fay Gosling,

Excused: Cynthia Larned and Brian Ladley.

II. Opening Prayer

The Rev. Della Wager Wells offered an opening prayer.

III. Moment of Silence for Necrology

George Phelps Clayson III
Joan Soares
Janet Hunt
Lillian Rarity Hargrove
Irene Laramée Lemoine

IV. Approval of Minutes of the 171st Annual Meeting

Carolyn Swiggart motioned to approve the minutes from the 171st Annual Meeting and Nick Brown seconded. There were no abstentions or objections. The motion passed unanimously.

V. Rector's Report

Della+ gave the Rector's Report included in the Annual Report.

VI. Senior Warden's Report

Debra gave the Senior Warden's Report included in the Annual Report.

VII. Junior Warden's Property Report

Jim gave the Junior Warden's Report for the Property Committee included in the Annual Report. Members of the Property Committee include: Jim Kaull, Chair, Kevin Venancio, Ed Gosling, Dave Monroe, Jere Wells and Chris Mohr.

VIII. Music Report

Randy gave the Director of Music and Organist Report for Music at Emmanuel included in the Annual Report.

IX. Ministries of Emmanuel – Committee Reports

Altar Guild Report from Bobby Gaines, Sandy Chapman and Brian Ladley included in Annual Report

Coffee Hour Report included in Annual Report

Bible Study Report from Jere Wells included in Annual Report

Communications Committee Report from Ellen Vadney, David Frazier, and Cindy Larned included in Annual Report.

Community Engagement Committee Reports: Co-Chairs David Frazier and Brian Ladley included in Annual Report reflecting:

- The Aquidneck Island Resilience Project (APREP - Members Brian Ladley and Jere Wells.
- Community Garden – Members Margaret Keiran, Della+ Jere Wells, Jim Kaull, and David Thalmann.
- Hydroponics and Groceries – Report by Catherine Curtis.
- Stitching Group – Report by Debra Venancio.
- Soup's On – Report by Jackie Breen.

Counters: Report by Carolyn Swiggart included in Annual Report.

Newport Classical Concerts: Report included in Annual Report.

Worship Committee: Report from Debra Venancio, Brian Ladley, Ellen Vadney, and Randy Elkins included in Annual Report.

X. Stewardship Report

Carolyn gave the Stewardship Report for the Committee included in the Annual Report. Members include: Carolyn Swiggart, Chair, Rev. Susan J. Barnes, Fay Gosling, Dave Monroe, Deborah Venancio and Valerie Martin.

XI. Treasurer's Report

Liz gave the Treasurer's Report included in the Annual Report.

XII. Open Discussion

Nancy Zitka recommends promoting our every Sunday morning music program outside on our sign boards.

Nick Brown inquired how we are differentiating Emmanuel on our website to attract new people in the community making a decision about which Newport Episcopal Church to choose to visit. Della+ indicates our website has been updated. We have parking. We are listed on Discover

Newport. David Thalmann mentions Della's+ relationship with Lynne Tungett, Publisher, Editor of Newport This Week and a recent Podcast interview she did with Newport This Week. A recommendation was made by Joya Hoyt to see if our grant writers might assist the Board of Housing Hotline to write grants. This might be a way for Emmanuel and Emmanuel's resources to collaborate out in the community.

XIII. Nominating Committee Report

Liz gave the Nominating Committee Report included in the Annual Report. There were no nominations from the floor received. A motion was made by Nick Brown and was seconded by Ellen Vadney to elect the slate of nominees. There were no objections, no abstentions and the motion passed unanimously.

XIV. Parishioner Recognition

The Saints Among Us Award: This has been a rough year and has required the very best and the most imaginative of all the stuff we have. You never know when you are going to need something from your prior career, or in your life as a home owner, or even your time as a kid as the youngest of a bunch of brothers - the only one who could fix stuff; and there is someone else who always walks with you everywhere and always shows up with you when you go to Soup's On and cleaning up at Soup's On, and showing up every day - supervising dog play on the front lawn, making sure the lawn is clean, and making certain Bouy doesn't just bedevil Harry and make him nuts. This year we are awarding the Saints Among Us Award to Nina and Jim Kaull!

The Lillian Rarity Hargrove Service Award: No matter where she goes, she is a ray of sunshine. She is always able to be here at events. Always here to usher. Always here to make sure everyone is welcomed! She has been an intercessor and continues in all of these roles. She grew up at Emmanuel and her family is from Emmanuel. This year we are awarding the Lillian Rarity Hargrove Service Award to Deborah (Deb) DeAscentis!

XV. Closing Prayer

Della+ provided the closing prayer that she and Lil would say together:

O Lord, support us all the day long, until the shadows lengthen, and the evening comes, and the busy world is hushed, and the fever of life is over, and our work is done. Then in *thy* mercy, grant us a safe lodging, and a holy rest, and peace at the last. *Amen.*

XVI. Adjournment:

The 172nd Annual Meeting adjourned at 12:43 p.m. on Sunday, January 14, 2024.

RECTOR'S REPORT

2024 — the Year of Widening Community

Every year at our Annual Meeting, we name our focus for the year. Last January, we said that 2024 would be the Year of Widening Community, and we set ourselves to work every day to build a welcoming community of deep belonging and wide invitation. We serve our community by sharing this building we've been given for ministry. That sharing forms us as a community, as we do our best every day to listen and work with each other with love, curiosity, and imagination on this big project that is itself Emmanuel's meaning and purpose. Sharing our home is not a sideline or a subplot, but the very essence of who we are and what we do, and we all have a place in the story.

We began five years ago with our Year of Growing in Faith in Community as we all got to know each other during the unique challenges of a global pandemic. Then 2021 was our Year of Rooting Community, and we began sharing our home with Newport Classical, rooting our relationship here at Emmanuel with NC's first chamber concerts in the Recital Hall. In 2022, the Year of Extending Community, Emmanuel restarted Soup's On after the pandemic and expanded the hydroponics ministry, helping the MLK food pantry offer year-round veggie day for the first time. Emmanuel lived out our community in 2023, the Year of Manifesting Community, caring for each other and our beautiful home here at Emmanuel as both the buildings and your rector went through structural repairs and systems updates.

And last year at this time, we set 2024 as our Year of Widening Community, sharing the gifts we're finding in community at Emmanuel with our neighbors close by on the block and far away in distance but close in our hearts. Emmanuel participated in Newport's Warming Center, meeting weekly with community leaders and supporting Newport Mental Health and the MLK Community Center in their roles in hosting and staffing the warming center. We also made gifts to the Mothers' Union in the Diocese of Western Tanganyika in Tanzania, buying 10 sewing machines for young women's tailoring training, enabling them to support their families. We prayed for our own election wisdom by supporting Bishop Emmanuel Bwatta's interfaith voter education program in DWT as our friends experienced a difficult election season in their own context.

During Lent here at Emmanuel, we used homemade bread and a plain ceramic chalice and paten at communion, cherishing their simplicity and our family here around God's table, seeking new insights into our physical and spiritual nourishment in God in our Lenten practices. Our Lenten series, Different Pathways on our Lenten Journey, explored our spiritual lives through poetry, music, art, and psychology, and some of us planted seeds as a prayer practice, while our daily email meditations were a source of inspiration for many. We transplanted our seedlings to the Community Garden after Easter, and received notice of a third generous installment in the McBean grant, allowing us to complete the HVAC systems in the public spaces of the church. We removed the old accessibility ramp on South Baptist Street to make space for nine new air conditioning condensers. We added four enormous "beehive" dry wells to accommodate the 1000 gallons per inch of rainwater coming off the roof system on the Dearborn Street side, keeping the church basement dry for the first time in many years.

The dry well excavation opened the possibility of grading and landscaping in the churchyard as a possible efficiency in thinking about accessibility ramps. We reached out to the Salve historical preservation department and developed the concept of the Community Bridge, widening our community even further. We hosted Swing Into Spring with the Larry Brown Swinglane Orchestra on Pentecost, taking out the three front pews in the Nave to make room for musicians, their instruments, big bridal parties, and

We share our home, building a vibrant, loving community

dancing, widening our community even further as musicians, dancers, and friends came even from off island to join in the fun.

The finish-work carpenter team of Wells, Kaull, and O'Donnell fashioned a new movable altar, a sound desk for our new system's operation, and a table for Jennie's crèche. We entered into an agreement with the City of Newport to offer public parking when the lot isn't needed for Emmanuel and Newport Classical's use, building Emmanuel's relationship with city leaders and doing our part to help local merchants and restaurants to thrive. Emmanuel became the official meeting place for RENEWport, the council of local nonprofit and community leaders committed to our community's success. We widen our community knowing that church is good for us. Life at Emmanuel is good — for our community, for our environment, for our future, and for our own health.

How does everything we do together at Emmanuel come together in this Year of Widening Community? Almost exactly three weeks ago, we gathered to watch and celebrate as contractors poured the form for the Community Bridge. A crew of 12 or more drove two big concrete mixers and smoothed the stiff wet mix into the forms, with one operating the pump truck from an instrument panel the size of a toaster oven suspended from a belt around his waist. Fifteen or more Emmanuelites, neighbors, and community members came to witness the great day, with others watching our "Concrete-cam" coverage from home, complete with color commentary, all live cast from my iPhone. Stonework comes next, with the original granite steps laid together to form a platform outside the Narthex door, with matching granite pavers on the surface of the bridge and stone veneer matching Emmanuel's exterior on the sides, and finally landscaping with native pollinators in a welcoming garden. Planning and preparing for the Community Bridge itself widened our community at Emmanuel, engaging community members, civic leaders, gardeners, Salve students and professors, and all of us with our many varied gifts in the purpose and fun of it all.

And all of the growing in faith in community, rooting community, extending community, manifesting community, and widening community has prepared us for our work in these times. Most of you probably saw the clips on the news of the prayer service at The National Cathedral in connection with the inauguration last week, with Bishop Mariann Budde's plea to President Trump to address our nation's difficult issues with mercy. It's not often that Episcopalians, or the Church broadly, takes center stage in global news, but this has been quite a week for that. At Emmanuel, we have our own close connections to this moment, through Tom and Bill's — and my — long friendship with the canon provost at The National Cathedral, Jan Cope. But closer yet is that Susan Barnes was called as rector of St. John's Episcopal Church in Minneapolis when Bishop Budde was elected Bishop of Washington.

Reactions to Bishop Mariann's plea for mercy have been about as mixed as possible, from proud and supportive to deeply disappointed, both in the wider world and within the Church. However we feel about this moment, we have to notice, and care, that others experienced it differently, and find ways to communicate effectively through that difference, or we will not be able to move forward on the difficult issues we face. We'll talk more about this over the next weeks as we all absorb and process how this moment speaks to us, but we've been growing in faith, and rooting, extending, manifesting, and widening community JUST FOR times such as this. How do we speak to others who see the world differently, with genuine curiosity about their experience, always ready to learn something new or change our minds? 2025 will be our Year of Bridging Community, as the great project of the Community Bridge helps us to open our doors wider to the whole community, bridging political, cultural, ethnic, racial, gender and other difference as we share our home, building a vibrant and loving community.

We share our home, building a vibrant, loving community

2020 — Year of Growing in Faith in Community

2021 — Year of Rooting Community

2022 — Year of Extending Community

2023 — Year of Manifesting Community

2024 — Year of Widening Community

2025 — Year of Bridging Community

SENIOR WARDEN'S REPORT

Vestry work is a ministry of the church and is grounded in prayer and guided by the Holy Spirit. Our Vestry begins every meeting with Evening Prayer in the Chapel starting at 6:00 p.m. on the third Thursday of the month. We close every meeting with a prayer. We invite you to join us for Evening Prayer! Each of our Vestry members has an opportunity during the year to lead Evening Prayer. After the service, we move to the Guild Room or Library for the meeting. We welcome you to attend Emmanuel Church's Vestry meeting if you would like to learn what your Vestry is working on. You will see that we are continuously working to fulfill our vision: ***We share our home, building a vibrant and loving community.***

You may or may not be aware that we keep a binder in the Parish Administrator's Office of the Vestry Minutes along with the Treasurer's Financial Reports: Statement of Activities (by restriction), Statement of Activities with Budget Variance, Statement of Financial Position Month Begin to End, Statement of Cash Flows and Notes to the Consolidated Financial Statement. These documents are there for your review on Sunday or when the office is open on Tuesday – Thursday from 9 a.m. to 12. Simply ask our Randy for it to review.

Presently the Committees of the Vestry of Emmanuel Church include the following:

- **Communications:** Members of this committee are Ellen Vadney and David Frazier. At the end of 2023 we developed a formal Communications Plan for the Communications Committee to use with a matrix of communications, media contacts, emergent communications, planned communications for the year with media/method and responsible person/committee and a communications request form. This communications/publicity request form link is under Contacts on our web page. To submit a Communications/Publicity Request send to it@emmanuelnewport.org and admin@emmanuelnewport.org along with any graphics or images that should be used.
- **Community Engagement:** Members of this committee are David Frazier, Brian Ladley, Margaret Keiran and David Thalmann. This is our *dream big* committee. How does Emmanuel Church reach out to our community and how do we bring people into Emmanuel? Do we do this with music, educational programs, working at Soup's On here at Emmanuel or volunteering at community organizations working to meet the needs of those in need? We have a community garden and we invite neighbors to use our raised beds to make them part of the Emmanuel community and give them a stake here.
- **Engaging in Meaning and Purpose:** This committee is led by Robert Messoro and Jere Wells. In this past year we had a Lenten Speaker Series with a meal of Soup/Bread along with daily parishioner Meditations on the readings for each of the 40 days of Lent. They were all just fantastic! In September we had a program on the interrelatedness of Spirituality and Health and Education with speakers Jere Wells, Lorraine Frazier and Phil Schmidt. It was well attended by parishioners and community members.
- **Finance:** Members of this committee are: David Frazier, Valerie Martin, Rob O'Donnell, Carolyn Swiggart, David Thalmann, and The Reverend Della Wager Wells.

We share our home, building a vibrant, loving community

- **Hospitality:** Led by Margaret Keiran and Paige Dinger. Their primary role is to foster participation in social events. They also identify volunteers to host coffee hour. We always work to identify at least two people for coffee hour so that it does not feel burdensome. If this is something you would like to help with, please let Margaret or Paige know you are willing to volunteer or simply sign-up on the list in the Library. If you are not a baker or cook, you can always purchase items to serve. People love fruit, pastries, cookies, cheese and crackers, etc. We welcome male and female volunteers. Coffee hour is such a great time to connect with your fellow parishioners and meet new attendees.
- **Nominating Committee:** This committee identifies parishioners to fill open positions on the Vestry, Diocesan Convention Delegates (2), Alternate Diocesan Convention Delegates (2), and Audit Committee Members (3). The members of the Nominating Committee are determined annually as follows by October of every year: two members of the Nominating Committee shall be Vestry Members chosen by the Vestry, two members of this Committee shall be parishioners chosen by the Vestry, and two members of the Nominating Committee shall be parishioners chosen by the Rector. This year the members of the Nominating Committee were: Suzanna Laramee, Chair, Paige Dinger, Steve Huttler, Liz McCarthy, Ellen Vadney and Kevin Venancio.
- **Property Committee:** The Property Committee cares for this big building that has been entrusted to us. This committee is led by Jim Kaull, our Junior Warden. Members of this committee are: Ed Gosling, Dave Monroe, Rob O'Donnell, Kevin Venancio, and Jere Wells. Chris Mohr joined the group to work on our new altar that was repurposed from two of the three pews that we moved to make space for our beautiful liturgical space at the crossing. I would like to thank John Laramee for overseeing the removal, moving and storage of the pews that were removed.
- **Stewardship:** This committee is led by our Assistant Treasurer, Carolyn Swiggart. Members of the Committee are: Valerie Martin, Robert Messori, Robert O'Donnell, Annie Sherman and Debra Venancio. Stewardship is about our spiritual gifts and how we use them in the community. It is not only about the pledge campaign. The Stewardship Committee has organized potluck dinners and oversaw our Celebrating Community Catered Dinner this past fall.
- **Worship** –Members of this committee are Debra Venancio, Brian Ladley, Ellen Vadney, and Randy Elkins, our Director of Music that helps to identify hymns to go with a service, identifying what might be the most appropriate Eucharistic prayer for the season or what might be a way to experience a season. Other members of our congregation involved in helping us to prepare for and participate in our services are: Andy Ross, Worship Leader and Preacher, members of our Altar Guild (Sandy Chapman and Brian Ladley), our Acolyte Bobby Gaines, our Eucharistic Ministers (Bobby Gaines, Debra Venancio and Cindy Larned), our Eucharistic Ministers in Training (Mary Duffy and Valerie Martin) and our Visiting Eucharistic Minister in Training (Valerie Martin), our Readers and Intercessors (Nick Brown, Norey Cullen, Paige Dinger, Ed Gosling, Margaret Keiran, Andy Ross, Carolyn Swiggart, David Thalmann, Debra Venancio, Kevin Venancio, Jere Wells, and Nancy Zitka), our Ushers/Greeters (Jackie Breen, Deb DeAscentis, Vickie Hicks, Jon Juhase, Nina Kaull, Valerie Martin, Dave Monroe, and Mary Twichell – Janet Parks is joining us in 2025), and our Counters (Jackie Breen, Ed Gosling, Fay Gosling, Jon Juhase,

We share our home, building a vibrant, loving community

Valerie Martin, Dave Monroe, Janet Nobis, Carolyn Swiggart, and Ellen Vadney), and our Livestream Controllers (Lyndsay Brown, Ryan Brown, Ellen Vadney and Mary Duffy). Bible Study led by Jere Wells helps attendees to interpret and apply a given Sunday's scripture readings to daily life.

- Senior Warden serves ex officio (as a result of one's position) on all Vestry Committees.

Have you visited Emmanuel's recently updated web page? It looks very nice!! This most recent update was done by our very talented Nellie Horvath! In addition to being more attractive, it provides useful information on: our worship schedule, Emmanuel Church, our Clergy, staff and Vestry, our Church history, Safe Church, Facility Rental, Baptisms, Confirmations, Receptions, Reaffirmations and Funerals. The website also provides information on our Ministries, Weddings at Emmanuel, Events, Giving Information and our most recent Stewardship Campaign, along with Monthly Calendars of Activities and how to sign-up for our weekly electronic newsletter (Constant Contact) if you are not already receiving it.

A few of the things our Vestry has worked on in the past year include:

- Safe Church Policies: The Episcopal Diocese of Rhode Island has adopted the Model Policy for the Protection of Children and Youth (under 18 years of age) and the Model Policy for the Protection of Vulnerable Adults Revised September 2022 that were adopted by the Episcopal Church at General Convention. The Emmanuel Vestry adopted and approved these two policies in a resolution on June 20, 2024. The two policies are posted on our web site for reference and available for inspection in the Church Offices during regular office hours.
- Safe Church Training was completed by all individuals as required by roles/positions.
- Safe Church Criminal Background Checks and Credit Checks were obtained for required roles/positions. A credit check is required of treasurers and those with check signing authority. Criminal Record Checks must be updated every 5 years.
- Individual files with training documents/ background checks and credit checks are maintained in a locked file cabinet in our Parish Office with access only by the Safe Church Administrator (Senior Warden).
- The Safe Church Audit was submitted to the Diocese on 8/22/2024.
- Certification of Safe Church training shall be renewed every three years (renewal requires 5 online courses vs. 10 for initial certification or attendance at an in person training class (we held one at Emmanuel this year).
- All Vestry Members agreed to "Expectations of a Vestry Member (2024) based on mutual respect and commitment to each other and the larger community.
- David Thalmann is facilitating the Vestry's work on developing a Strategic Plan for Emmanuel Church. Strategic Planning is important as it helps to define our purpose and mission, ensuring what we are working on aligns with our mission, vision and values. It will help us to prioritize initiatives and allocate resources (time, staff and finances) where they can have the most impact. Once fully developed, we will need to regularly review the strategic plan to see how we are doing, making certain everyone is on the same page about goals/priorities and to see that we are updating

We share our home, building a vibrant, loving community

it as indicated. Having a strategic plan will help us in communicating succinctly with others about our church – our “elevator speech.” Having a living strategic plan will help when Emmanuel is applying for grants.

- The Rev. Della Wager Wells and I attended an Active Shooter Educational Program by the Newport Police Department on April 12th. After the event we procured cans of wasp spray and placed them under the Usher’s pews, at the pew in back of the Baptismal font, and up in the choir area by the lectern in the church and placed one on the lower shelf of the table at the entrance area of the Chapel and another in the parish office. The wasp spray has a range of 20 feet and can compromise an individual if it is sprayed in his/her eyes.
- We had a committee plan for the Community Bridge Fund Raising Event on May 19th featuring the Larry Brown Swinglane Orchestra. The committee included: Valerie Martin and Debra Venancio Co-Chairs, The Rev. Della Wager Wells, Jim Kaull, Robert Messoro, Rob O’Donnell, Ellen Vadney, Suzanna Laramie, Jennie Huttler, Gillian Friedman Fox, Michele Gallagher, Olivia Kirshy, and John Laramie. The event was a success in raising both friends and funds. It was a great evening! We even had Swing Dance group members come to show us how Swing is done! The Committee recommended we remove the first 3 rows of pews for the event. We then had a generous donor who helped us refinish the floors!! The Vestry and I give a big thank you to all who planned and supported the event!
- We held another Fund/Friend Raising Event for the Community Bridge on September 20th entitled Emmanuel Church Celebrating Community – A Catered Dinner at Emmanuel. All 60 tickets were sold out and the proceeds went to our Community Bridge. There were a number of people who purchased tickets and donated the tickets so that others could attend. This allowed people who may not have been able to attend otherwise to attend and also allowed us to invite people into our building who might otherwise not have occasion to do so. The individuals who helped make this dinner a success were: Jim Kaull, Margaret Keiran, Liz McCarthy, Valerie Martin, Debra Venancio, Rob O’Donnell, The Rev. Della Wager Wells, Jere Wells, Emily Wigutow and her catering staff.
- In December the Vestry approved a By-Laws revision resolution: “At any time there are members of the vestry who do not live in Newport full time, or who are required to travel frequently or otherwise unavailable for vestry meetings, the Nominating Committee may nominate and the Corporation of Emmanuel Church may elect at the annual meeting, an additional Vestry Member to ensure quorum and full discussion. The additional Vestry member shall be subject to all rights and responsibilities of Vestry persons at-large and shall have a term of three years.”
- In October at the Diocesan Convention I was elected to the Diocesan Council. This is a 3-year term. “The Diocesan Council develops and implements the mission, program, budget and policies of the diocese and approves the formation of all new commissions, committees and defines the scope of their work, and requires reports from all commissions and committees; approves the Bishop’s appointment of individuals to chair Diocesan organizations; and makes adjustments in the current budget of the Diocese and approves the proposed diocesan budget upon recommendation of the Commission on Finance and the Committee on Program and Budget.”
- Some more good news in closing: Jackie Breen donated a brand new Automatic External Defibrillator (AED) unit to Emmanuel. We have purchased an AED cabinet to house the AED

unit and it will be placed on the back (north wall) of the Narthex. We will put the automatic defibrillator out in the near future for use once we do training. I am working with the Newport Fire Department to do a Community CPR/AED class at the end of this month. My last bit of good news is that the Diocese has changed their Apportionment calculation (like a tax paid to the Diocese) due to receiving a generous bequest this past year. The Diocese will be able to use a portion of that bequeathed money in perpetuity to cover the decline in apportionment assessments by raising the first \$5,000 of congregational income that is exempted in calculating the apportionment to the first \$30,000 of congregational income that is exempted in 2025 and beyond.

Respectfully Submitted,

Valerie Martin

Senior Warden and Trustee

JUNIOR WARDEN AND PROPERTY COMMITTEE REPORT

Heating Ventilation and Air Conditioning (HVAC)

We began 2024 with the completion of the new heating system in the Church and chapel by Nason's Inc. The system is fueled by four fuel efficient gas fired hot water boilers that feed nine separate air handlers controlled in three heating zones. Funding for the work came from two generous grants from the Alletta Morris McBean Foundation. The Grant also included funds for adding air conditioning to the Church and Recital Hall which began in April and was completed by Nasons in time for an early July wedding and the beginning of rehearsal for the artists and musicians performing Newport Classical's Summer Concert series. In May, we received a third grant from the Alletta Morris McBean Foundation for air conditioning of the Chapel, Library, Guild Room and to bring to code, a make-up air system for the kitchen and Church. Work will begin shortly in this final phase of the HVAC. All three grants from McBean totaled \$495,000.

Dry Well

The digging and construction of the replacement dry well for the runoff from sections of the roof of the Church, Library and Recital Hall took place in late April. Mello Construction designed and placed four connected, cement "beehive like" dry wells in the southwest corner of the church yard. The Episcopal Diocese of Rhode Island provided a grant in the amount of \$15,000.00 from the Diocesan Resource Fund that covered most of the cost.

Removal of Pews

In early May, in preparation for the "Swing into Spring" fundraiser, church volunteers laboriously removed twelve solid red oak pews from the front of the Nave and from the transept to enlarge the liturgical space and allow room for concerts, large weddings and other events. Captain Brown donated the funds to resurface the floor once filled by the pews in the transept and in the new larger crossing. John Laramee offered to store the original solid red oak pews at his warehouse.

Altar in Crossing

Church volunteers constructed a larger altar used in the crossing during services. All the materials used came from two of the smaller pews and the modesty panel from the transept. Wheels were added for easy removal.

Got Junk?

In September, the church once more benefited from the Salve Regina University student community service day. This year's focus was on removing unused items that consisted mostly of lumber, old furniture, and broken kneelers all of which filled a 30-yard dumpster with the help of the Salve Football team.

Doors

Having received the grant for the dry well, we were able to free up Church budgeted funds to take on other deferred repairs. Among those was the long overdue restoration of the original exterior doors to the Narthex, Columbarium, Chapel, and Spring Street exterior door to tower. This work was completed in October by Newport Window Restoration. Other maintenance projects paid for from these budgeted funds included repairing and painting the plaster walls in the Library and in the water damaged stairway in the South Baptist Street apartment.

Recital Hall Roof Repair

The Church benefited from a \$42,000 grant from the Champlin Foundation for the repair of the Recital Hall roof and addressed other water intrusion issues in the Parish House. The application was submitted by Newport Classical. Newport Construction Services replaced 150 deteriorated slates.

Community Bridge

In December Mello Construction broke ground for the “Community Bridge” a permanent access ramp to the Narthex entrance to be used by all. Mello Construction is serving as the general contractor. The cement base has been poured. Stonework and iron railing, all ADA compliant, will be completed over the next several weeks. Funds for the Bridge came from proceeds from the Swing into Spring dance and from generous donations from the congregation, Newport Classical, and the wider community.

Future Property Needs

Clerestory Windows

All four clerestory windows on the south side of the Nave need full restoration. This will require staging to be erected inside of the Nave and is included in the cost. Proposed cost: \$150,000.00.

Exterior Stone Pointing

Many of the base stone caps and the stone arches over the doors and some windows need repointing. This was previously done some time ago by using acrylic caulking that has now failed and is letting water in between the stone blocks. Proposed cost: \$42,500.00.

Iron Fence

The iron fence and gates surrounding the church yard need restoration. We are waiting to receive a proposal.

We share our home, building a vibrant, loving community

MINISTRIES OF EMMANUEL

Emmanuel’s many important ministries are led by our parishioners. In late 2022, the Vestry created committees made up of both Vestry members and parishioners to help share the story and purpose of these ministries so that they can expand and grow. All are welcome!

Altar Guild—Bobby Gaines, Sandy Chapman, Brian Ladley

A group of parishioners who care for the altar linens, and prepares the altar before each service for the eucharist, including for funerals, baptisms, and weddings Altar Guild is a wonderful way for those who enjoy beautiful linens, setting the table for warm family meals, and getting to know others as we innovate to make our worship more meaningful and engaging for the whole congregation. All are welcome!

Bible Study—Jere Wells

Emmanuel’s lectionary-based bible study meets every Sunday morning at 9:00 am in the Library. Led by Jere Wells, the group explores the background and significance of the scriptures that are part of the day’s worship and discusses their spiritual significance for our lives. It is also a time of meaningful fellowship that informs our lives as members of the Emmanuel community.

Communications—Ellen Vadney

The Communications Committee provides Emmanuel with the following:

- Maintaining the church’s website (<https://emmanuelnewport.org>)
- A Form for submitting communications request to the committee. This can be found on the website at [Contact | Emmanuel Church | Serving Our Neighbors](#)
- Livestreaming services to Facebook and YouTube simultaneously. The average number of people on the livestreams increased from 9 in 2023 to 16 in 2024. Sunday services are posted for later viewing on the website (https://emmanuelnewport.org/virtual_emmanuel/)
- Making regular postings on Emmanuel’s social media accounts which include Facebook and YouTube as well as Pinterest, Instagram, X, and Nextdoor. Anyone interested in assisting with parish communications and learning more should contact Ellen Vadney at it@emmanuelnewport.org.

Social Media Platform	Number of followers/subscribers	
	2023	2024
Facebook	570	613
Instagram	301	337
Pinterest	52	51

We share our home, building a vibrant, loving community

X (formerly Twitter)	None yet	1
NextDoor	None yet	None yet
YouTube	101	191

Community Engagement—Brian Ladley

- A synopsis of Emanuel’s participation with Aquidneck Parish Resilience Project (APREP):

Regarding the Warming Center for the winter months of 2023/2024, Emmanuel’s rector participated in weekly Warming Center planning and update calls with the leaders in the group. Emmanuel provided presence, leadership, welcomed hosting (but was not called upon to do so), and when funding slowed for MLK’s continuation of the program in January 2024, Emmanuel made an emergency gift from the Rector’s Discretionary Fund to MLK to support the program. The specific leadership Emmanuel provided that was unique was in helping to shape, memorialize, and extend the Bishop’s reasoning that allowed the program to get started under the leadership, program support, and emergency expertise and policies of CODAC, MLK, and the Police and Fire Departments.

Standard Diocesan policy would have required all of their volunteers, employees, doctors, and emergency staff to be trained and certified in Safe Church and adapt all of Saint John the Evangelist Church’s (and any hosting church’s) facilities to the related facility polices — for each denomination or applicable facility. We helped articulate the policy that Emmanuel’s vestry adopted as our Safe Church adherence: when our facility is used in compliance with the standards of the applicable use/program under a use agreement or other document, the standards applicable to that use and agreement apply, rather than imposing Episcopal Church rules and standards on programs the Episcopal Church is not running. Emmanuel received a certificate of recognition from the City for this service.

The dry well project at Emmanuel was our specific response to APREP’s request for our environmental resilience inventory. We requested and received funding from the Diocesan Council for this major project to replace our century old failed cistern with 4 new “beehive” cisterns that can handle the thousands of gallons of rainwater that drain from the roof in a storm event. The final hookup of the cisterns fortuitously required excavation exactly where we are currently building our Community Bridge, which will allow universal access through our main entrance. We will see a cost savings since the two projects can be combined.

- **Community Garden**

During Lent, Nancy Zitka, Olivia Kirshy, Paige Dinger, Deb Venancio, and Della+ grew seeds in our windows as a prayer practice, transplanting the seedlings to the Community Garden after Easter.

After Easter, we transplanted our seedlings to the Community Garden, planting all three raised beds, five potato bags on the swing set on Spring Street, and our two garden carts covered with rainbow grow bags. The garden produced, as Matthew’s gospel says, some a hundredfold, some sixty, some thirty.

We brought our harvest forward at the offering each week during the summer and early fall, sharing tomatoes, cucumbers, potatoes, okra, carrots, peppers, and fresh herbs with the congregation as the fruits (and vegetables!) of our community. The pickles were especially popular! Paige Dinger and Della+ made and canned roasted tomato soup as thank you gifts for our Community Bridge donors.

Gardeners for God

Counters—Carolyn Swiggart

Volunteers from the parish meet after the 10:00 a.m. Sunday service to count and log the offerings received from morning services as well as any checks received during the week. The receipts are taken for deposit to BankNewport. Great thanks are due to Ed and Fay Gosling, Valerie Martin, Ellen Vadney, Janet Nobis, and Dave Monroe for their consistent and dedicated work as counters throughout the year. We are grateful for new counters, Jon Juhase and Jackie Breen, and look forward to their continued service. We are looking for more members of the parish who would like to give service to the church and learn how to do the counting.

Engaging in Meaning and Purpose Committee:

My first year on the Vestry has been exciting. It is a privilege and a joy to be part of a team of dedicated, inspired, and talented people.

At Reverend Della's direction, I partnered with Jere Wells to support others in the congregation who have a desire to share their gifts, ideas, and interests.

After attending a Wednesday evening supper and hearing Dr. Phil Schmitt, I asked Dr. Phil if he would like to share his views on spirituality and wellness. His response was very enthusiastic. Jere formed the concept and invited Lorraine Frazier to participate in a panel discussion on October 23, 2024. The night was a huge success both in content and in attendance.

I also had been in discussions with Laurie Bosman and her knowledge and experience in labyrinths. With Jere's guidance and ability to design a labyrinth to fit a space in the front of the church, Laurie guided the Vestry, Salve students, and members of Emmanuel through a prayer/meditation walk through the labyrinth December 19th and 20th.

An idea being developed as I write this is a topic for the Wednesday potluck during Lent.

If there is anyone in Emmanuel who would like to share some ideas with the Vestry, please let us know.

Thank you for the opportunity to serve,

Robert Messoro

Vestry-at-Large

Finance Committee

The members of the Finance Committee in 2024 were David Frazier, Treasurer, Valerie Martin, Rob O'Donnell, Carolyn Swiggart, David Thalmann, and The Reverend Della Wager Wells.

Hospitality

Paige Dinger and Margaret Keiran are primary members of this committee. Our goal is to foster participation in social events which is vital to growing our community. We know that social interaction is an important feature of Episcopal tradition in parishes throughout the world. One of the primary goals is hosting Sunday coffee hour during this weekly ritual. We thank all the people who give so generously of their time and talents. Emmanuel Church has and will continue to host events throughout the year which involve the community. In the past year we welcomed people to our "community garden" during the Pride Parade. We are eager to participate in other events going forward in 2025. Our participation in Newport Classical Christmas Concert was a huge success. Emmanuel Church hosted a wonderful reception with sweets and cider which was well received.

We share our home, building a vibrant, loving community

We look forward to 2025 and please contact us with your thoughts on ways to increase participation and try new ideas!

Hydroponics—Jere Wells

The hydroponics ministry in the old gym continues to provide weekly greens to the MLK, Jr. Center's food pantry. With three 8' grow beds in full production, the hydroponics system produces an average of 18-20 bags of lettuce each week. Established by parishioner Catherine Curtis, the hydroponics ministry engages several parish and community volunteers who regularly maintain proper pH, nutrient, and water levels for optimal production. At the end of this year, Catherine asked to step back from leadership of the program, and Dave Monroe and Jere Wells have taken on that role, while Catherine continues to provide counsel and grow the seedling pods that are transplanted in the grow beds.

Music Ministry

In 2024 the music ministry/musicians' circle of Emmanuel Newport saw significant growth. There have been several more singers added throughout the year leaving us up from 6 in January 2022 to 25+ instrumentalists, singers and technical folk on the roster as 2024 ended. 2024 saw continued participation by local college students with an increase in their numbers to some 8 or more (2 on scholarship, the others volunteer).

2024 saw more growth in ensemble playing on keyboard instruments which has enhanced worship experiences. Sylvia Strong and Caleb Dinger joined Randy Elkins and Suzanna Laramee for a quartet of players playing two pianos on the Christmas Concert. Suzanna as well as Caleb Dinger, continued to other piano solo work in services as well and generally bringing great cheer and positive attitudes to the ministry.

In December 2024 we bid farewell to Ali Hosford, Artist in Residence, who sang soprano with the musicians' circle and as soloist in services. Ali's contributions in musical as well as spiritual leadership have been greatly inspirational and most helpful in the execution of our services. Ali is looking forward to spending more time in her role as Momma of 3 active young daughters.

Two people were appointed Artists in Residence to fill the position left vacant by Ali's departure. Suzanna Laramee, avocational concert pianist, and Caleb Dinger, keyboard player for the US Navy Band NE, will provide amazing leadership as keyboard players, conductors and vocalists. They will be heard often in multiple capacities at the church.

Others on the music staff include Choral Scholars Tara Byrnes and Ethan Bouchet from Salve Regina University and Nellie Horvath, music assistant. We have also been joined by M. Duffy as a ministry intern as they finish their undergraduate degree with emphasis on the untold story of Mary of Magdala. We look forward to developing a relationship with music students (and any others interested) from the University of Rhode Island thanks to the appearance of Kenneth Santos, oboist, in our services in December. A freshman at URI, Kenneth is a talented multi-instrumentalist. Barbara Barrow, Luke Bayne and Jodi deSalvo continue to join us in worship from time to time on their instruments and Ryan Brown continues to be available weekly on the drums.

Other highlights of the year include

- A continuing, intentional effort to engage with our transient community, inviting them to participate in the musicians' circle when they are in residence in Newport
- Multiple weddings and funerals - some requiring management from without the staff and finding great success in volunteers' efforts to provide these services
- A joyful Christmas concert produced entirely by Emmanuel Church with repertoire that represents the depth of the Musicians' Circle's talent and ability to transport and inspire

We share our home, building a vibrant, loving community

- Interfacing with other Episcopal Churches in Newport for a Christmas Day Service
- Continued development of collegial relationships with the music department of St. George's School which has led to many, many marvelous things and many more to come.
- Continuation of the Scholarship Singer program which was launched in January 2023. This includes two paid positions (scholarship) for student singers (generally college level) to supplement and lead voice sections in the choir.
- Arrival of a 1959 Hammond C3 organ with Leslie 147 tone cabinet owned by our music director and loaned to the church for use in services.
- Continued Development of relationship with Newport Classical Staff
- New involvement at Mercy Chapel of Salve Regina University in their Taize services.

As we finished 2024 on a high, we look forward to the challenges 2025. Our Musicians' Circle has become a vibrant, active organization of people who genuinely enjoy their calling to share their gifts with each other and our community. Our message of inclusion across beliefs, personalities, perspectives, and time of life is truly working to create a vibrant music ministry. I am thrilled to be a part of this growth and look forward to the opportunities and challenges we will face in the future.

Randy Elkins,

Director of Music and Organist (and Parish Administrator, Wedding Coordinator)

Property Committee – See the Junior Warden's Report

Soup's On—Jackie Breen

Soup's On dinner is served on the first Tuesday of the month at 5:00 p.m. The number of guests attending average thirty-five to forty-eight, weather permitting. We are not yet back to our pre-Covid attendance numbers. We always prepare a hot meal "Thanksgiving style." Desserts are donated by Holy Cross Church members. Our volunteers for Soup's On include Emmanuel parishioners, Holy Cross parishioners, St. Barnabas parishioners and James L. Maher Center clients. These wonderful volunteers show up rain or shine. Music is provided by our parishioner, Dennis Bristow, and enjoyed by all.

Stewardship Committee

This year the Stewardship Committee was comprised of Valerie Martin, Senior Warden; Robert Messoré; Robert O'Donnell; Debbie Venancio; and Carolyn Swiggart, Assistant Treasurer and Chair. The committee met several times over 2024 to strategize what our stewardship message would be and how to deliver it. Taking note of the capital campaign to fund the construction of a new Narthex entry, the Stewardship Committee settled on its pledge campaign theme of "Building Community." The committee felt it was important to give parishioners a sense of legacy and belonging to Emmanuel Church, as well as an understanding of how pledge money is used. A great deal of thought was put into what topics should be explored and explained to parishioners. We decided that the parish should become aware of actual budget needs, which probably was the first time the Emmanuel Church Stewardship Committee has discussed actual dollar amounts in a pledge campaign. Constant Contact was the main source of communication with the parish. Articles about Emmanuel's stained-glass windows, our benefactor Natalie Bayard Brown, a history of the founding of Emmanuel Church, why one should pledge, and the value of pledging were sent by email during the Fall months. In addition, Ash Bennett gave a talk during a Sunday service about tithing.

We had 53 households pledge a total of \$221,534 for 2025. To compare how we did in 2024, we had 60 households that pledged \$231,906, from which we collected a total of \$202,479.90. In 2023, we had

We share our home, building a vibrant, loving community

pledges of \$199,117 and actually collected \$205,937.63. These past years have generated higher yields than in 2022 (\$180,990 pledged and \$175,786 collected) and 2021 (\$167,330 pledged and \$165,494 collected). We're going in the right direction, but we have work to do. It is still puzzling why some households continue to give donations during the year but refuse to make a formal pledge. We acknowledge challenging economic influences this year affected our 2024 receipts. However, we note that parishioners and others gave over \$132,000 in response to the campaign to build the new entry to the Narthex in 2024. It is clear that Emmanuel's parishioners support our community and missions, and for that we are very grateful.

I owe great thanks to the dedicated members of the Stewardship Committee this year, without whom we would not have had such a thoughtful and successful campaign. We also appreciate the time that Ash Bennett gave to speak to the parish. On behalf of Emmanuel Church, we are grateful to our fellow parishioners who made their pledges in support of our operations and programs.

Thank you for your support, and it has been an honor to serve as Assistant Treasurer.

Respectfully submitted,
Carolyn C. Swiggart
Assistant Treasurer

Stitching Group—Debra Venancio

The stitching group was organized to invite all who stitched in any kind of way; knitting, crocheting, sewing, hemming a dress, embroidering, darning socks, and hooking rugs --you name it! You don't even have to know how; the group will help you learn. Or you can just come to chat about the world we live in, our church community, next week's fundraiser or next month's pot luck. We can talk about how we can reach out to our community or others around the world while we sip on tea or coffee, lemonade or water, and nibble on home-made or store-bought cookies. We enjoy each other's company from 2pm-4pm on Thursdays.

Our group is small right now 4-5 people, and sometimes a few more stop by to join us. Give us a try...and bring a friend.

Love and Light
Debra Venancio

Ushers and Greeters – See Senior Warden's Report

Worship Committee

The Worship Committee works with the Rector and the Choir Director to help make our worship engaging, interesting and inviting. The work of the committee touches on not only the liturgy and the music but also community involvement, bible study, celebration and understanding.

As Epiphany brought us into Lent, Bobby Gaines burned the left-over palms from last Palm Sunday so that we could use them for the Ash Wednesday service the next day. Della+ would later mix the sweet-smelling nard to give them a smooth consistency and a nice fragrance. We then celebrated the end of Epiphany with a Shrove Tuesday Pancake Supper complete with beads, boas and a King Cake.

Our Lenten Series brought us to understanding and interpreting the daily scripture. Each day a different parishioner would relate how the daily reading spoke to them. Their reflection was posted in Constant Contact. On Wednesdays many of us gathered for soup and bread. Ellen Vadney talked about how Lent may be practiced by other cultures and religions. Susan Barnes presented art as a way of expressing our Lenten journey. Jere Wells shared poems that speak to our Lenten experience. Randy Elkins showed the group how Lent inspires the music we use to understand the Lenten journey. Phil Schmitt took us on the

We share our home, building a vibrant, loving community



road to temptation to gain an understanding of how Jesus may have felt psychologically as he was tempted by Satan. Maggie Dawn brought it all together as she described how spiritual growth is enhanced and strengthened when we gather together in community.

All this prepared us for a beautiful flower filled, music filled celebration of Easter Day and Eastertide.

Pentecost arrived in all its redness. The Holy Spirit came flying in with flames of glory. Additional musicians played to enhance the choir music (Way to go Randy!). The annual photograph of the parishioners in their Pentecost red garments was taken to memorialize the gathering (Thank you Tom Vadney!).

Advent with the Advent wreath...not liturgy, but the parishioners love this custom representing the four Sundays of Advent with the themes of hope, peace, joy and love. The poinsettias, candles, wreaths and garland make the church even more beautiful. The star of Bethlehem. O Come, O Come, Emmanuel. The music of Christmas. John 1:1-14.

Fundraisers, potluck dinners...along with anything that brings us together as a community, the Worship Committee is open to your suggestions at any time. Please see Debbie Venancio or Ellen Vadney... or better yet, Join us!

Wishing us all Love and Light in 2025

Debra Venancio

NOMINATING COMMITTEE REPORT

The Nominating Committee, composed of these members: Suzanna Laramee, chair; Stephen Huttler, Kevin Venancio, Paige Dinger, Ellen Vadney, and Liz McCarthy met on November 24th and December 1st and arrived at this slate:

Junior Warden

Jim Kaull

Treasurer

David Frazier

Assistant Treasurer

Carolyn Swiggart

Clerk

Margaret Keiran

Vestry-at-Large

Jackie Breen

Paige Dinger

Danielly Muchiutti

RI Diocesan Convention Delegates

Valerie Martin

Deb Venancio

RI Diocesan Convention Alternate Delegates

Ellen Vadney

Vicki Hicks

Auditors

Liz McCarthy

Paige Dinger

Rob O'Donnell

After some discussion, the Nominating Committee determined that due to individual travel obligations and various scheduling issues, it would be prudent to add another Vestry-at-Large position. The recommended individual was Jackie Breen, pending the approval of this additional position by the Vestry on December 12th.

Respectfully submitted,
Suzanna Laramee, Chair
Emmanuel Church Nominating Committee

NOMINEE BIOGRAPHIES

Jim Kaull, Junior Warden

Jim has served the past two years on the vestry holding the position of Junior Warden overseeing the church property. Jim is a third-generation parishioner of Emmanuel Church. His late uncle, also named Jim Kaull, served as Junior Warden for twenty years ending in 1981. According to church archives from 1905, Jim's grandmother Bessie Tisdall Kaull served on the alter guild along with Natalie Bayard Brown, who dreamed and built Emmanuel as a home for the whole community. Jim and Nina returned to Newport in 2020 after leaving in 1981 for careers in higher education administration that took them to Boston for eight years and to Washington DC for thirty years. Since returning, they have been regular volunteers for "Soups On." Jim and Nina have one son, James, who lives and works in New York City.

David Frazier, Treasurer

David Frazier was born and raised in Oklahoma, graduating from Oklahoma State University with a BS in mathematics. After graduation, David moved to Houston to work for Exxon in information technology. In Houston, David met Lorraine (Quinn), and they married in 1979.

David and Lorraine moved to Oklahoma, where David accepted a job with Halliburton Co., and where their daughter, Molly Kathleen, was born. Molly was born with severe mental and physical limitations. Molly lived a happy and peaceful life, but, sadly, passed away in January 2022.

David and Lorraine traveled internationally with David's job, residing in Duncan, Oklahoma; London; and Houston. David retired in 2017 as the Sr. Director of Information Security and Risk Management after 38 years of service at Halliburton. David and Lorraine moved to New York in 2018 when Lorraine was appointed dean of the Columbia University School of Nursing. David and Lorraine currently split their time between New York, Houston, and Newport, traveling to Newport as often as Lorraine's schedule permits!

David characterizes his faith journey as "a continuing process of prayer, faith, growing, and learning more about Christ's love and His mission for me in this world."

David and Lorraine have always been active in church life. David served on the board of deacons in the Baptist church that they attended in Oklahoma and served on the church council at Christ the King Lutheran Church in Houston, where David and Lorraine both sang in the choir. They also attended Christ Church Cathedral in Houston and Christ Episcopal Church in Little Rock (where Lorraine served as dean of the University of Arkansas School of Nursing).

David has also been active in civic life, serving as treasurer and president of his local Kiwanis club and Toastmasters club. In Oklahoma, David and Lorraine formed a non-profit, Centennial Park, Inc., and David served as President of this organization that successfully raised funds, organized community volunteers, and built the first handicapped-accessible playground in Oklahoma.

David enjoys music (particularly jazz!) and photography, and both he and Lorraine are happy to be members at Emmanuel Church Newport, where the music is beautiful, the gospel is preached, and the community is served!

Carolyn Swiggart, Assistant Treasurer

Carolyn C. Swiggart came to Emmanuel Church through The Rev. Della Wells and her husband, Jere. My late husband, John Wayt, and Jere were high school friends in Atlanta, and we had a happy reunion in 2020 after the Wells moved to Newport. Upon meeting Della, I moved my "letter" to Emmanuel Church in 2021. I am a life-long Episcopalian, and I enjoy the mission and history of Emmanuel. I live in

We share our home, building a vibrant, loving community

Jamestown, and I also have a law practice and a residence in Greenwich, Connecticut. Over the years, I have served on the boards of several organizations, including the Indian Harbor Yacht Club, Rotary, United States Power Squadrons, and the Daughters of the Cincinnati. I am also a "Blue and Gold Officer" (candidate liaison) for the United States Naval Academy Admissions Department. My avocations are boating, history, and art.

Margaret Keiran, Clerk

Margaret with her husband, Steve, moved to Portsmouth eight years ago. At the time, Margaret was still a practicing Nurse Practitioner working in palliative and hospice care. Now retired, she enjoys all this island life has to offer along with frequent travel, reading and knitting! Margaret joined Emmanuel after experiencing a warm welcome and has worshipped here since.

Jackie Breen, Vestry-at-Large (3-year term)

Jackie has been a member of Emmanuel Church since 1951. Her Johnsen family has a long history at Emmanuel Church along with being very active and engaged members in the church. As a child she was involved in the Girls' Choir, the Girl's Friendly Society and the YPF. In adulthood Jackie was a Sunday school teacher, the chairperson of the Lawn Fete (twice!), a Vestry-at-Large member, volunteered with our Emmanuel Day School and for the past 14 years she has been the Chef for Emmanuel's monthly Soup's On Community Dinner.

Jackie worked at Newport Hospital for 40 years as a Registered Nurse and presently works at the James L Maher Center as one of their RNs on staff. Jackie is looking forward to being on the Vestry again to support the Emmanuel Community and our goals moving forward.

Paige Dinger, Vestry-at-Large (3-year)

Paige moved to Newport and started attending Emmanuel Church in 2023. She has been on the Vestry since January 2024. In addition, she regularly volunteers for coffee hour and actively participates in the Musicians Circle (singing in the choir and playing trumpet).

Paige was born and raised just south of Nashville, TN in Brentwood. She is a graduate of Trevecca Nazarene University, where she earned a Bachelor's degree in Interpersonal and Organizational Communication and met her husband, Caleb Dinger. For several years, Paige and Caleb lived in Franklin, TN where she worked for her family's business doing administrative and bookkeeping work and he was a working musician.

In 2022, Caleb joined the United States Navy as a musician. Since Caleb's career in the Navy brought them to Newport in 2023, Paige has worked at the Navy Exchange Uniform Store on base and is currently the Tailor Shop Supervisor.

Danielly Muchiutti, Vestry-at-Large (3-year)

Danielly relocated to Newport in 2014 after spending more than a decade sailing in the area and falling in love with its charm.

She joined Emmanuel two years ago and has been an active member of the Musician's Circle as well as the Salve Regina Chorister ever since. She is also an avid supporter of Newport Classical and rarely misses an event.

Danielly has been practicing as a Nurse Anesthetist for over 20 years, with her participation in medical missions standing out as the highlight of her career.

A lifelong learner with an inherent curiosity, she embraces the role of a student of life, continually expanding her knowledge through courses, lectures, and travel.

Danielly is an entrepreneur at heart and has been a part of numerous business ventures and startups, including developing an online platform for socially and environmentally conscious businesses, opening a holistic wellness center, and launching her own clothing line. Most recently, she has been exploring blockchain technology.

Having lived in Brazil, France, Madagascar, and Kenya, she brings a global perspective to everything she does and is fluent in English, Portuguese, Spanish, and French.

She has a deep love for Newport and her favorite slogan is “Newport or Nowhere.” She enjoys sailing around the harbor and beyond, as well as skiing, yoga, Pilates, savoring good food, and spending quality time with family and friends.

Danielly feels truly blessed to be part of this vibrant community.

We share our home, building a vibrant, loving community

REPORT OF THE ASSISTANT TREASURER

As Assistant Treasurer, I am responsible for depositing and accounting for the receipts of Emmanuel Church. In particular, the weekly offerings, rental payments, Newport Classical payments, pledge receipts, and grants make up most of our annual revenue, in addition to investment income. My other responsibility is the annual stewardship campaign. I have been blessed to work with our Treasurer, David Frazier, and I thank him for his advice and assistance.

Treasurer's Report

Budget for 2025

Accounts	Actual Jan 01, 2024 - Nov 30, 2024	Budget Jan 01, 2024 - Nov 30, 2024	Budget Remaining Jan 01, 2024 - Nov 30, 2024	Actual Annualized	December Annual Budget This Year	Proposed 2025 Budget
Revenues						
Contributions, Support						
Revenues from direct contributions						
40105 2024 Pledge Revenue	208,856.00 [1]	190,895.87	(17,960.13)	208,856.00 [2]	208,250.00	
40111 2024 Excess Pledge Rev-Unrestr	3,122.66 [3]	-	(3,122.66)	3,406.54	-	
40114 2025 Pledge Revenue	211,634.00 [4]	-	(211,634.00)	221,174.00 [5]	-	[6]
40115 2025 Excess Pledge Rev-Unrestr						2,500.00
40116 2025 Pledge Revenue						215,000.00 [7]
40200 Plate Collections	5,158.00	4,583.37	(574.63)	5,626.91	5,000.00	5,200.00
40300 Other Gifts	8,319.30	-	(8,319.30)	9,075.60	-	3,400.00
40310 Donations to Vestry Quasi-Endowment	28,207.16	-	(28,207.16)	30,771.45	-	
44300 Health Reimbursements from Della	(195.00)	-	195.00	(212.73)	-	
44420 Processing Fees	115.05	-	(115.05)	125.51	-	125.00
44430 In-kind donations	392.00	-	(392.00)	427.64	-	400.00
Total Revenues from direct contributions	465,609.17	195,479.24	(270,129.93)	479,250.91	213,250.00	226,625.00
Revenue from non-government grants						
Foundation/trust grants						
40325 Brown Fund	21,199.00	20,666.00	(513.00)	23,126.18	20,686.00	10,500.00
40350 Mercer Fund Proceeds	629.49	629.49	-	839.32	839.32	840.00
Total Foundation/trust grants	21,828.49	21,315.49	(513.00)	23,965.50	21,525.32	11,340.00
Total Revenue from non-government grants	21,828.49	21,315.49	(513.00)	23,965.50	21,525.32	11,340.00
Total Contributions, Support	487,437.66	216,794.73	(270,642.93)	503,216.41	234,775.32	237,965.00
Earned revenues						
Revenue from program-related sales & fees						
40400 Baptism & Funerals	1,900.00	-	(1,900.00)	2,072.73	-	1,900.00
40500 Wedding Payments	11,982.50	9,500.00	(2,482.50)	13,071.82	9,500.00	13,500.00
40550 Weddings- Deposits, non-refundable	2,700.00	-	(2,700.00)	2,945.45	-	2,800.00
Total Revenue from program-related sales & fees	16,582.50	9,500.00	(7,082.50)	18,090.00	9,500.00	18,200.00
Revenues from enterprises						
44600 Newport Classical base fee	20,985.00	18,700.00	(2,285.00)	22,892.73	20,400.00	20,400.00
44650 Classical- Other Contributions	14,586.22	15,000.00	413.78	15,912.24	19,000.00	18,000.00
Real estate rental-not debt-financed						
44351 So. Baptist St Apartment	21,480.00	21,450.00	(30.00)	23,432.73	23,400.00	23,400.00
44352 Dearborn St Apartment	31,900.00	31,900.00	-	34,800.00	34,800.00	34,800.00
44356 St.Andrews Room Lease	4,525.00	4,950.00	425.00	4,936.36	5,400.00	5,400.00
44357 Kitchen - Rental	2,300.00	4,750.00	2,450.00	2,509.09	4,750.00	2,300.00

Accounts	Actual Jan 01, 2024 - Nov 30, 2024	Budget Jan 01, 2024 - Nov 30, 2024	Budget Remaining Jan 01, 2024 - Nov 30, 2024	Actual Annualized	December Annual Budget This Year	Proposed 2025 Budget
44530 Parking Lot Fees	14,950.00	12,000.00	(2,950.00)	16,309.09	12,000.00	18,000.00
44540 Church Rooms Rental	3,200.00	-	(3,200.00)	3,490.91	-	3,600.00
<i>Total Real estate rental-not debt-financed</i>	<i>78,355.00</i>	<i>75,050.00</i>	<i>(3,305.00)</i>	<i>85,478.18</i>	<i>80,350.00</i>	<i>87,500.00</i>
Real estate rental cost-not debt financed						
44451 So. Bapt Apt Cost	(2,480.96)	-	2,480.96	(2,706.50)	-	(3,000.00)
44558 Rental Property cleaning, maintenance	(475.30)	-	475.30	(518.51)	-	(600.00)
44630 Parking Lot cost	(503.51)	-	503.51	(549.28)	-	(600.00)
<i>Total Real estate rental cost-not debt financed</i>	<i>(3,459.77)</i>	<i>-</i>	<i>3,459.77</i>	<i>(3,774.29)</i>	<i>-</i>	<i>(4,200.00)</i>
<i>Total Revenues from enterprises</i>	<i>110,466.45</i>	<i>108,750.00</i>	<i>(1,716.45)</i>	<i>120,508.85</i>	<i>119,750.00</i>	<i>121,700.00</i>
Revenue from Investments						
Rockland Invest Revenue						
46101 Rockland Invest Inc & Cap Gain/Loss	8,360.97	-	(8,360.97)	11,147.96	-	10,000.00
46102 Rockland Invest Chg Acct Value	11,557.25	-	(11,557.25)	15,409.67	-	13,500.00
<i>Total Rockland Invest Revenue</i>	<i>19,918.22</i>	<i>-</i>	<i>(19,918.22)</i>	<i>26,557.63</i>	<i>-</i>	<i>23,500.00</i>
Rockland Endowment Revenue						
46201 Rockland Endow Inc & Cap Gain/Loss	11,610.51	-	(11,610.51)	15,480.68	-	14,000.00
46202 Rockland Endow Chg Acct Value	61,267.77	-	(61,267.77)	81,690.36	-	70,000.00
<i>Total Rockland Endowment Revenue</i>	<i>72,878.28</i>	<i>-</i>	<i>(72,878.28)</i>	<i>97,171.04</i>	<i>-</i>	<i>84,000.00</i>
Rockland Parker Fund Revenue						
46301 Rockland Parker Inc & Cap Gain/Loss	248.37	-	(248.37)	331.16	-	300.00
46302 Rockland Parker Chg Acct Value	1,253.81	-	(1,253.81)	1,671.75	-	1,500.00
<i>Total Rockland Parker Fund Revenue</i>	<i>1,502.18</i>	<i>-</i>	<i>(1,502.18)</i>	<i>2,002.91</i>	<i>-</i>	<i>1,800.00</i>
Money Market Acct Revenue						
46401 Money Mkt Acct Interest	0.68	-	(0.68)	0.74	-	0.75
<i>Total Money Market Acct Revenue</i>	<i>0.68</i>	<i>-</i>	<i>(0.68)</i>	<i>0.74</i>	<i>-</i>	<i>0.75</i>
DIT Investment Revenue						
46501 DIT Dividends ("Additions")	11,254.27	-	(11,254.27)	12,277.39	-	13,500.00
46502 DIT Interest ("Investment Earnings")	9,511.95	-	(9,511.95)	10,376.67	-	12,000.00
46503 DIT Realized Gain/Loss	(2,333.85)	-	2,333.85	(2,546.02)	-	(2,600.00)
46504 DIT Unrealized Gain/Loss	42,705.12	-	(42,705.12)	46,587.40	-	45,000.00
<i>Total DIT Investment Revenue</i>	<i>61,137.49</i>	<i>-</i>	<i>(61,137.49)</i>	<i>66,695.44</i>	<i>-</i>	<i>67,900.00</i>
<i>Total Revenue from Investments</i>	<i>155,436.85</i>	<i>-</i>	<i>(155,436.85)</i>	<i>192,427.76</i>	<i>-</i>	<i>177,200.75</i>
<i>Total Earned revenues</i>	<i>282,485.80</i>	<i>118,250.00</i>	<i>(164,235.80)</i>	<i>331,026.61</i>	<i>129,250.00</i>	<i>317,100.75</i>
Restricted revenue						
Donor-designated revenue						
41100 Community Engagement - Baum Fund	21,678.00	20,600.00	(1,078.00)	23,648.73	20,600.00	12,000.00

Accounts	Actual Jan 01, 2024 - Nov 30, 2024	Budget Jan 01, 2024 - Nov 30, 2024	Budget Remaining Jan 01, 2024 - Nov 30, 2024	Actual Annualized	December Annual Budget This Year	Proposed 2025 Budget
41310 Flowers	2,085.00	1,833.37	(251.63)	2,274.55	2,000.00	2,000.00
41700 McBean Building Grant	115,000.00	-	(115,000.00)	125,454.55	-	150,000.00 (8)
43500 Rector's Discretionary Fund Gifts	8,034.28	-	(8,034.28)	8,764.67	-	9,000.00
43600 Musicians Fund	-	4,583.37	4,583.37	-	5,000.00	-
43800 Soup's On Donations - Restricted	205.00	3,666.63	3,461.63	223.64	4,000.00	300.00
47120 Hydroponics	-	200.00	200.00	-	200.00	-
47130 Community Garden	450.00	3,000.00	2,550.00	490.91	3,000.00	450.00
47140 Community Bridge Ramp	132,219.75	-	(132,219.75)	144,239.73	-	-
47150 Cleaning Svc-HOPE grant	5,000.00	-	(5,000.00)	5,454.55	-	-
47160 Dry well/resilience	15,000.00	-	(15,000.00)	16,363.64	-	-
47170 AED Unit	1,300.00	-	(1,300.00)	1,418.18	-	-
Total Donor-designated revenue	300,972.03	33,883.37	(267,088.66)	328,333.12	34,800.00	173,750.00
Total Restricted revenue	300,972.03	33,883.37	(267,088.66)	328,333.12	34,800.00	173,750.00
Other Support						
47700 Gains from insurance claims	1,000.00	-	(1,000.00)	1,090.91	-	-
Satisfaction of donor restrictions						
48100 NA Rise Without Restriction	188,684.45	-	(188,684.45)	205,837.58	-	-
48110 NA Rise with restriction	(188,684.45)	-	188,684.45	(205,837.58)	-	-
Total Satisfaction of donor restrictions	-	-	-	-	-	-
Total Other Support	1,000.00	-	(1,000.00)	1,090.91	-	-
Special Event						
49100 Big Band non-gift rev	415.25	-	(415.25)	453.00	-	-
49120 Big Band gift rev	7,044.00	-	(7,044.00)	7,684.36	-	-
49130 Big Band Sponsorship	66,369.50	-	(66,369.50)	72,403.09	-	-
49140 Big Band Concession Revenue	264.00	-	(264.00)	288.00	-	-
49150 Big Band contra	(70,645.75)	-	70,645.75	(77,068.09)	-	-
49200 Big Band Cost	(3,447.00)	-	3,447.00	(3,760.36)	-	-
49205 Celebrating Community Dinner Donation	2,177.00	-	(2,177.00)	2,374.91	-	-
49206 Celebrating Community Dinner Fair Value	1,240.00	-	(1,240.00)	1,352.73	-	-
Total Special Event	3,417.00	-	(3,417.00)	3,727.64	-	-
Total Revenues	1,075,312.49	368,928.10	(706,384.39)	1,167,394.70	398,825.32	728,815.75

Accounts	Actual Jan 01, 2024 - Nov 30, 2024	Budget Jan 01, 2024 - Nov 30, 2024	Budget Remaining Jan 01, 2024 - Nov 30, 2024	Actual Annualized	December Annual Budget This Year	Proposed 2025 Budget
Expenses						
Expense-Personnel related						
Salaries & related expenses						
Salaries						
52120 Clergy Compensation	70,890.38	70,890.38	-	77,334.96	77,335.00	81,975.00 [9]
52130 Clergy SECA	5,423.00	5,423.00	-	5,916.00	5,916.00	6,272.00
52310 Parish Admin	19,638.63	19,638.63	-	21,423.96	21,424.00	26,536.00 [10]
52340 Director of Music	29,080.37	29,080.37	-	31,724.04	31,724.00	39,392.00
52399 Custodian	8,836.63	8,836.63	-	9,639.96	9,640.00	
Total Salaries	133,869.01	133,869.01	-	146,038.92	146,039.00	154,175.00
Retirement contributions						
52220 Clergy Retirement Plan	13,736.47	13,736.25	(0.22)	14,985.24	14,985.00	15,884.46
52420 Lay Retirement Plan	5,180.01	5,180.12	0.11	5,650.92	5,651.00	6,922.00
Total Retirement contributions	18,916.48	18,916.37	(0.11)	20,636.16	20,636.00	22,806.46
Employee benefits-not retirements						
52210 Clergy Medical & Dental Ins	12,711.00	13,343.00	632.00	13,866.55	14,556.00	13,584.00
52410 Lay Medical Insurance	5,972.22	4,400.00	(1,572.22)	6,515.15	4,800.00	8,592.00
52411 Lay Health Savings Acct	-	-	-	-	-	4,296.00
Total Employee benefits-not retirements	18,683.22	17,743.00	(940.22)	20,381.69	19,356.00	26,472.00
Payroll taxes						
52501 Payroll Taxes Church Employees	0.01	-	(0.01)	0.01	-	
52603 Employer SS/Med Church	5,027.92	4,741.00	(286.92)	5,485.00	5,172.00	5,862.56
Total Payroll taxes	5,027.93	4,741.00	(286.93)	5,485.01	5,172.00	5,862.56
(Note: Accrual for rector sabbatical)						
Total Salaries & related expenses	176,496.64	175,269.38	(1,227.26)	192,541.79	191,203.00	259,316.02
Contract services expenses						
51425 Music-Artist in residence	5,400.00	8,250.00	2,850.00	5,890.91	9,000.00	7,800.00
51427 Parish Intern	150.00	-	(150.00)	163.64	-	2,700.00
51428 Music Assistant	2,975.00	-	(2,975.00)	3,245.45	-	2,700.00
51430 Choral Scholars	4,880.00	4,858.37	(21.63)	5,323.64	5,300.00	5,300.00
52140 Supply Clergy	3,220.00	3,593.37	373.37	3,512.73	3,920.00	4,000.00
52320 Bookkeeper	1,500.00	2,250.00	750.00	1,636.36	2,500.00	3,000.00
52600 Supply Musicians & Soloists	200.00	458.37	258.37	218.18	500.00	500.00
53450 Contract Cleaners	9,620.00	-	(9,620.00)	10,494.55	-	13,000.00 [12]
Total Contract services expenses	27,945.00	19,410.11	(8,534.89)	30,485.45	21,220.00	39,000.00
Travel & meetings expense						

Accounts	Actual Jan 01, 2024 - Nov 30, 2024	Budget Jan 01, 2024 - Nov 30, 2024	Budget Remaining Jan 01, 2024 - Nov 30, 2024	Actual Annualized	December Annual Budget This Year	Proposed 2025 Budget
83100 Travel	3,410.23	-	(3,410.23)	3,720.25	-	2,500.00 [13]
83200 Conferences, conventions, meetings	2,686.73	-	(2,686.73)	2,930.98	-	3,500.00
Total Travel & meetings expense	6,096.96	-	(6,096.96)	6,651.23	-	6,000.00
Total Expense-Personnel related	204,441.64	194,679.49	(9,762.15)	223,027.24	212,423.00	304,316.02
Non-personnel-related expenses						
Office expenses						
50440 Copier Service	262.44	-	(262.44)	286.30	-	300.00
50450 Office Supplies Expense	1,231.73	1,833.37	601.64	1,343.71	2,000.00	2,000.00
50470 Postage & Printing	1,073.86	1,650.00	576.14	1,171.48	1,800.00	1,500.00
Total Office expenses	2,568.03	3,483.37	915.34	2,801.49	3,800.00	3,800.00
Facility & equipment expenses						
51100 Altar	39.51	458.37	418.86	43.10	500.00	300.00
51200 Columbarium	3,165.95	-	(3,165.95)	3,453.76	-	5,000.00
53051 Alarm Service/Fire Inspection	5,795.68	1,100.00	(4,695.68)	6,322.56	1,200.00	4,000.00
53151 Cleaning Supplies	866.63	916.63	50.00	945.41	1,000.00	1,000.00
53200 Landscaping	2,514.00	600.00	(1,914.00)	2,742.55	600.00	1,000.00
53250 Pest Control	1,020.00	550.00	(470.00)	1,112.73	600.00	1,400.00
53301 Repairs & Maintenance- Church	18,417.13	916.63	(17,500.50)	20,091.41	1,000.00	65,000.00 [14]
53401 Snow Removal	3,390.00	5,000.00	1,610.00	3,698.18	5,000.00	5,000.00
70200 Building & Safety upgrades	2,222.97	458.37	(1,764.60)	2,425.06	500.00	600.00
70300 Musical Instrument Restoration Parker	455.00	-	(455.00)	496.36	-	500.00
70800 Church AV systemd	28.79	-	(28.79)	31.41	-	100.00
70900 Depreciation	912.89	-	(912.89)	995.88	-	19,134.24
Utilities						
53531 Oil	1,459.41	1,999.98	540.57	1,592.08	1,999.98	
Gas						
53521 Gas Church Building	16,893.22	18,333.37	1,440.15	18,428.97	20,000.00	22,000.00
53621 Gas Community common space [15]	(4,492.40)	-	4,492.40	(4,900.80)	-	(8,800.00)
Total Gas	12,400.82	18,333.37	5,932.55	13,528.17	20,000.00	13,200.00
Electric						
53511 Elec. 76007	8,617.53	7,333.37	(1,284.16)	9,400.94	8,000.00	10,000.00
53512 Elec. 22008	1,522.08	1,833.37	311.29	1,660.45	2,000.00	2,000.00
53513 Elec. 83008	402.88	412.50	9.62	439.51	450.00	500.00
53611 Electric Community common space [16]	(3,065.78)	-	3,065.78	(3,344.49)	-	(5,000.00)
Total Electric	7,476.71	9,579.24	2,102.53	8,156.41	10,450.00	7,500.00
Water/Sewer						

Accounts	Actual Jan 01, 2024 - Nov 30, 2024	Budget Jan 01, 2024 - Nov 30, 2024	Budget Remaining Jan 01, 2024 - Nov 30, 2024	Actual Annualized	December Annual Budget This Year	Proposed 2025 Budget
Community engagement						
55400 Community Engagement	7,969.29	9,441.63	1,472.34	8,693.77	10,300.00	15,000.00
55700 Hydroponics	11.99	200.00	188.01	13.08	200.00	200.00
57200 Soup's On Meals	2,243.67	2,750.00	506.33	2,447.64	3,000.00	3,000.00
57400 Other Outreach Expenses	192.91	-	(192.91)	210.45	-	250.00
70850 Community Garden	1,013.89	3,000.00	1,986.11	1,106.06	3,000.00	1,000.00
<i>Total Community engagement</i>	<i>11,431.75</i>	<i>15,391.63</i>	<i>3,959.88</i>	<i>12,471.00</i>	<i>16,500.00</i>	<i>19,450.00</i>
Vestry						
51600 Vestry Activities	449.64	1,100.00	650.36	490.52	1,200.00	1,200.00
<i>Total Vestry</i>	<i>449.64</i>	<i>1,100.00</i>	<i>650.36</i>	<i>490.52</i>	<i>1,200.00</i>	<i>1,200.00</i>
<i>Total Program expenses</i>	<i>14,005.80</i>	<i>19,379.13</i>	<i>5,373.33</i>	<i>15,279.05</i>	<i>20,850.00</i>	<i>24,000.00</i>
Operating Expenses						
70400 SBA Roof Loan Interest	1,803.67	1,675.00	(128.67)	1,967.64	1,815.00	1,800.00
<i>Total Operating Expenses</i>	<i>1,803.67</i>	<i>1,675.00</i>	<i>(128.67)</i>	<i>1,967.64</i>	<i>1,815.00</i>	<i>1,800.00</i>
Non-Operating Expenses						
57100 Rectors Discretionary Fund Pass through	7,279.28	-	(7,279.28)	7,941.03	-	9,000.00
58000 Donations/grants to other organizations	755.00	-	(755.00)	823.64	-	1,000.00
Investment Expense						
71100 Rockland Investment Expense	1,796.69	-	(1,796.69)	2,395.59	-	2,500.00
72100 Rockland Endowment Expense	3,617.82	-	(3,617.82)	4,823.76	-	5,000.00
73100 Rockland Parker Expense	74.48	-	(74.48)	99.31	-	120.00
75100 DIT Investment Expense	453.94	-	(453.94)	495.21	-	600.00
<i>Total Investment Expense</i>	<i>5,942.93</i>	<i>-</i>	<i>(5,942.93)</i>	<i>7,813.86</i>	<i>-</i>	<i>8,220.00</i>
<i>Total Non-Operating Expenses</i>	<i>13,977.21</i>	<i>-</i>	<i>(13,977.21)</i>	<i>16,578.53</i>	<i>-</i>	<i>18,220.00</i>
Total Expenses	409,832.20	355,180.34	(54,651.86)	448,420.34	386,100.98	595,876.26
Net Total	665,480.29	13,747.76	(651,732.53)	718,974.36	12,724.34	132,939.49

Accounts	Actual Jan 01, 2024 - Nov 30, 2024	Budget Jan 01, 2024 - Nov 30, 2024	Budget Remaining Jan 01, 2024 - Nov 30, 2024	Actual Annualized	December Annual Budget This Year	Proposed 2025 Budget
53551 Water Spring St 05200	2,592.84	2,658.37	65.53	2,828.55	2,900.00	3,000.00
53552 Water Dearborn 05100	600.42	641.63	41.21	655.00	700.00	750.00
Total Water/Sewer	3,193.26	3,300.00	106.74	3,483.56	3,600.00	3,750.00
Total Utilities	24,530.20	33,212.59	8,682.39	26,760.22	36,049.98	24,450.00
Total Facility & equipment expenses	63,358.75	43,212.59	(20,146.16)	69,118.64	46,449.98	127,484.24
Other expenses						
50410 Advertising	432.00	-	(432.00)	471.27	-	
50420 Communications	4,044.02	4,125.00	80.98	4,411.66	4,500.00	4,500.00
50430 Computer Software, Licensing, Equip. & Support	3,738.40	3,391.63	(346.77)	4,078.25	3,700.00	4,000.00
50600 Wedding / Funeral Coordinator Fees	1,797.18	1,950.00	152.82	1,960.56	1,950.00	2,000.00
50610 Online Processing Fees	321.58	458.37	136.79	350.81	500.00	500.00
51050 Apportionment	40,208.00	40,207.75	(0.25)	43,863.27	43,863.00	44,356.00
52150 Clergy Professional Expenses	-	3,666.63	3,666.63	-	4,000.00	500.00
52160 Continuing Ed	893.13	916.63	23.50	974.32	1,000.00	1,200.00
52601 Worker Comp Insurance Church	365.25	393.25	28.00	398.45	429.00	450.00
52640 Payroll Services	667.68	687.50	19.82	728.38	750.00	750.00
53101 Insurance	37,511.00	34,287.00	(3,224.00)	40,921.09	37,404.00	43,000.00
55200 Miscellaneous Expenses	264.98	-	(264.98)	289.07	-	200.00
55250 Accrued Credit Card Charges	91.71	-	(91.71)	100.05	-	200.00
55300 Membership dues-organization	750.00	-	(750.00)	818.18	-	900.00
Total Other expenses	91,084.93	90,083.76	(1,001.17)	99,365.38	98,096.00	102,556.00
Business expenses						
53112 Property Taxes, Dearborn Apt.	2,120.21	2,667.00	546.79	2,312.96	2,667.00	2,700.00
54000 Uncollectible Pledge	10,375.00	-	(10,375.00)	11,318.18	-	11,000.00
Total Business expenses	12,495.21	2,667.00	(9,828.21)	13,631.14	2,667.00	13,700.00
Total Non-personnel-related expenses	175,603.88	139,446.72	(36,157.16)	191,567.87	151,012.98	247,540.24
Program expenses						
Worship						
51300 Flowers	555.73	1,375.00	819.27	606.25	1,500.00	1,000.00
51310 Worship supplies	612.21	-	(612.21)	667.87	-	300.00
Total Worship	1,167.94	1,375.00	207.06	1,274.12	1,500.00	1,300.00
Music						
51400 Music Library	717.53	550.00	(167.53)	782.76	600.00	800.00
51447 Music - Misc	238.94	-	(238.94)	260.66	-	250.00
51450 Plano Maintenance	-	962.50	962.50	-	1,050.00	1,000.00
Total Music	956.47	1,512.50	556.03	1,043.42	1,650.00	2,050.00